

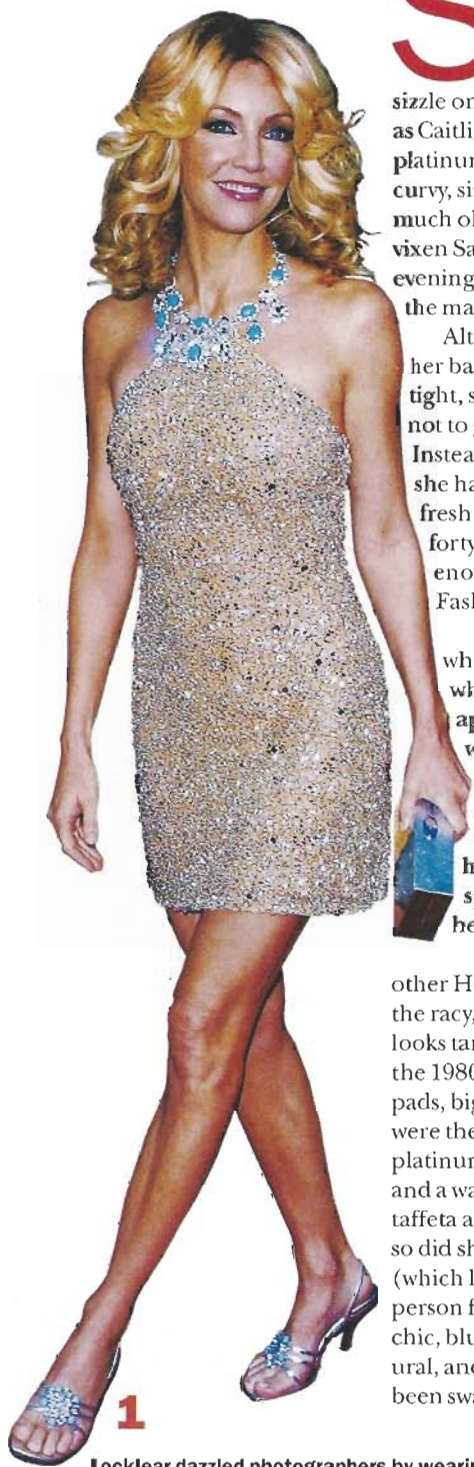
Fashion Focus Heather Locklear

Sustaining a successful television career for 20 years is quite a feat, and sustaining it as the All-American babe-next-door is even more remarkable. At 41, Heather Locklear continues to sizzle on prime-time television, most recently as Caitlin on the sitcom *Spin City*. With her platinum hair, azure eyes, and petite but curvy, size-two figure, Locklear doesn't look much older than she did when she starred as vixen Sammy Jo on *Dynasty*, the over-the-top evening soap opera that came to symbolize the material excesses of the 1980s.

Although Locklear hasn't changed her basic look—long, blond hair and tight, sexy clothes—she has managed not to get mired in a fashion time warp. Instead of looking like an aging ingenue, she has tweaked her signature style to stay fresh and cutting-edge. How many other fortysomethings are deemed hip enough to co-host the VH1/Vogue Fashion Awards?

"She is one of the few women whose style transcends time because whatever the decade, she is always appropriate and knows what works for her," says Brenda Cooper, an image consultant and Emmy Award-winning costume designer. "She also has this wonderful, youthful spirit which accounts for a lot of her personal style."

What sets Locklear apart from other Hollywood sirens is that, despite the racy, barely-there dresses, she rarely looks tarty or hard-edged. As a starlet in the 1980s when linebacker shoulder pads, big hair, and gobs of glossy makeup were the rage, Locklear fell in line with a platinum Farrah flip, heavy black eyeliner, and a wardrobe that emphasized bouffant taffeta and tight leather. As times changed, so did she. The gorgeous flaxen hair (which landed her a contract as a spokesperson for L'Oreal hair color) is now cut in chic, blunt layers, the make-up is more natural, and the Nolan Miller creations have been swapped for subtler, though still sexy,



1

Locklear dazzled photographers by wearing a glittering mini-dress from Celine at the Golden Globes this year. Still reed-thin despite a penchant for junk food, she seems closer to 20 than 41.



2

Looking a bit like a Greek goddess in a feminine full-length white gown at the Emmy Awards two years ago. Locklear usually opts for colors that complement her famous blond tresses

Close-up

VITAL STATISTICS Age 41. Born in suburban Los Angeles, California, the youngest of four children of a former marine colonel who became an administrator at UCLA, and a production executive at Disney. In her freshman year at UCLA, Locklear modeled for the cover of the campus sportswear catalog; two casting agents saw her picture and launched her career in commercials. She dropped out of college to pursue acting.

BIG BREAK Cast by Aaron Spelling in two popular 1980s series, as conniving Sammy Jo on *Dynasty* and as sweet rookie police officer Stacy Sheridan on *T. J. Hooker*.

MEMORABLE TELEVISION ROLES

Amanda, the scheming advertising executive and landlord of an apartment building filled with sexy young things on *Melrose Place*; Caitlin Moore, the bright, beautiful campaign manager on *Spin City*.

FILM ROLES A husband-stealing trophy wife in *The First Wives Club* (1996); the rich fiancée of an aggressive television reporter (Charlie Sheen) in *Money Talks* (1997).

PERSONAL Divorced Tommy Lee, drummer of heavy metal band Motley Crüe, in 1992 after nearly eight years of marriage; two years later married Bon Jovi guitarist Richie Sambora. Daughter Ava Elizabeth born in 1997. Currently lives in a hilltop mansion in Los Angeles.

“Heather is one of the few women whose style transcends time because whatever the decade, she is always appropriate and knows what works for her.” **BRENDA COOPER, IMAGE CONSULTANT**

designs from Dolce & Gabbana and Prada. Locklear's clothes might be clingy, but they are always clean-lined and simple.

A born-and-bred San Fernando Valley girl who favors lively colors and casual attire like tank tops and capri pants, Locklear knows how to adapt. When she spent a year in New York filming *Spin City* before the production relocated to Los Angeles, she quickly embraced understated, tailored clothes, Manolo Blahnik boots, and Manhattan's requisite neutral color palette of black and beige. Now that she's back home in California with her husband, Richie Sambora (guitarist for the rock band Bon Jovi), and her daughter, Ava, Locklear is happy to unwind in stretch pants, sandals, and halter tops.

Unlike other actresses who credit their sylph-like figures to rigorous workouts and Spartan diets, Locklear cheerily admits to being a fast-food junkie who needs a daily fix of Taco Bell tacos and Krispy Kreme donuts. (When she starred on *Melrose Place*, it wasn't unusual for her to order a cheeseburger for breakfast.) Her beauty regimen is minimal: weight-training three times a week, make-up remover at night, and sunblock every day.

Friends and colleagues insist that Locklear is nothing like the ruthless vamps she has played on television. She's often described as sweet, accessible, self-deprecating, and down-to-earth. Though admittedly, no one achieves—and maintains—her level of success without fierce determination and confidence.

“Critics figured I was just another blond,” she once said. “But I never thought I'd be a flash. The best revenge is sticking around.”

BY JILL GERSTON. ADDITIONAL RESEARCH BY CAREY SANTIAGO.

How She Gets That Look

WARDROBE ESSENTIALS Figure-hugging clothes with simple lines that bare the shoulders and legs; skinny pants, tank tops, tight jeans, leather jackets. Favors white for evening jackets. Favors white for evening

ACCESSORIES Spike-heeled sandals and boots; small shoulder bags

FAVORITE LABELS Dolce & Gabbana, Versace, Gucci, Chanel



In a taupe leather jacket and matching blouse paired with slim-fitting pants. Though she still leans toward sexy outfits, Locklear keeps her look understated and chic by choosing clothes with clean, simple lines



The California native favors casual styles like the white capri pants and jauntily tied Oxford shirt shown here. Strappy yellow sandals, dangly earrings, and an apricot-and-white shoulder bag add splashes of color



Showing off her well-toned shoulders in a silver sequined dress by Loewe at the 2000 Golden Globes. The dainty sandals are by Manolo Blahnik